

2010

Call of the Loon

End of Trail Newsletter



2010 Season at End of Trail

First, let me thank all my guests for a truly rewarding experience in my first full season at Ritchie's End of Trail.

Wally, Steve, Taylor and I arrived in Bisco on March 30th. I thought we could get to camp by snowmobile and get an early start to the season. Well to my surprise we managed to get to camp on April 5th by boat. They had a very mild winter in Bisco and very little snow. Water levels were down drastically and the locals couldn't remember such an early thaw or such low water levels.

When we arrived in camp we were surprised by some animal activity. The first thing we noticed were Moose tracks right down the main trail. The second thing we noticed was a lot of Beaver damage. If memory serves me correctly we had over a dozen good size trees downed on the property along with over 20 good size saplings. When we investigated further we walked the trail behind Cliff and discovered about another dozen trees in the back bay taken down by Beavers. To date and we are still splitting in mid October we figure over 26 cords of wood from the Beavers.

Because we were able to get to camp so early we got a lot accomplished before open. Besides the usually camp opening routine we did a lot of painting including, water pumps, muskoka chairs, fish hut, tool shed, gas shed, signs and most cabins. As far as repairs and maintenance goes we managed to build a new gas shed door, finished the renovations to the houseboat, new tong & grove ceiling in Sunset, new tong & grove floor in Bayview, new pressurized shower heads in the main showers plus dozens of small jobs. Over the years there has been a lot of brush piled up around camp so we tried to burn this when weather permitted. We wanted to make sure we weren't burning in dry windy conditions. Taylor spent almost a full week down by the Cliff cabin docks burning this brush and we will still need to burn for another full week when time and weather permits.

Ok, what everyone wants to know, how was the fishing? That might depend on the angler you speak too. To be completely honest some anglers seem to do exceptionally well and others don't. I attribute this mainly to the knowledge of the lake. Steve gets out at least 5 times a week and does very well. Steve doesn't usually get out till after work, usually around 4:30pm and a bad day would be 4 walleye and a good day over a dozen. In the first few months of the season Steve did a lot of back trolling with worm harnesses and jigging with worms. Later on in the season Steve found a fishing partner and they spent a lot of time in the North End of the lake jigging off shoals and points. This was very productive producing 12-20 walleye in 3-4hrs. I wasn't able to get much fishing in till mid season than spent two or three days a week on the water with Taylor & Wally. Wally loves to fish! We preferred trolling and would net between 4-8 walleye in a couple of hours. After Taylor left Wally and I explored Norton's Arm and Whitefish Bay a little more mixing up trolling and jigging and did pretty good. In the fall I teamed up with Steve and Warren. We started jigging deeper holes in the North End and even the South End averaging between 20-40 walleye in a three hour outing. There's still a little controversy over live bait, minnows compared to worms. Although worms seems to work as well as minnows, minnows do seem to have a slight advantage in the fall. I believe jigging produces far more fish but still prefer to troll or cast the shallows for larger walleye during the warmer months. Although we release 99% of our fish we do have at least one fish fry per week and we only keep fish in the 12"-16" range for our fry's. From the amount of fishing Steve and I have done we have seen large variations in fish size. Because of the wide range of year classes this fishery should be exceptional for generations to come if we all do our part in conservation of this fishery and others. What we need to do is leave the breeders (over 18.1") in the lake and keep the smaller ones for our fish fry's. Keep a camera on hand and take that memory of your big fish home with you and leave that big guy for your kids and their kids to catch one day.



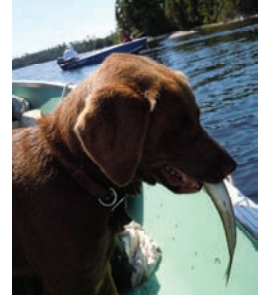
Steve Arcudi
Maintenance Supervisor
Fishing & Bear Guide



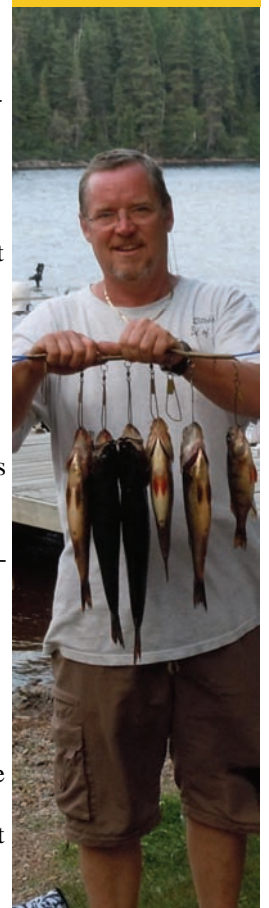
Taylor McCann
"the go to guy"
Taylor took over for Ryan at the end of last year and joined us again for the 2010 season. It was a pleasure having my nephew at camp with me and he was a the guy you could always count on for all those odd jobs and helping out where ever needed.



April 5, 2010
Sawyers (mainland pick up)
Water level down 4 feet



Wally



Your Host
Brian Drysdale

Big Fish Contest...

Congratulations to this year's winners!

There are three categories in our "Big Fish Contest", largest walleye, northern pike, and perch. The fish does not have to be kept to qualify but a photo of the fish and angler must be provided. To enter the contest the participant must be a guest at Ritchie's. The minimum size to enter the catch is 25" for walleye, 30" for northern pike and 12" for perch.

This year's winners are both new and returning guests. Biggest Northern goes to Bernie Lubberts of Addison, NY with a 42.5" Northern Pike. I am a little embarrassed by this next one as I have the picture, the measurement but no name. So if you recognize your picture or your buddies picture below please call or email so I can get your info for your prize.

Speaking of prizes I have made a change. In previous years we have given away a sweatshirt and ball cap but I will now be giving the winners a plaque with picture, story and date of the big catch. Check them out at www.sportsmantrophy.ca

I didn't receive any entries for biggest Perch this year but there were some reports of perch being caught in the 12-14" range. I would be happy to reward the angler who would like to claim this honor and prize. Please send me a short note of when and where you caught your fish.

Ok, I'll throw my submission in on this one. I was down Norton's Arm one early morning in June with Wally. I stopped just outside the weed bed under the train trestle throwing a J13 rainbow floating repel when it hit. I thought I had a 20" plus Walleye on but to my surprise I pulled in a 13.5" perch



The Canadian Tradition is a television show in its second season and will be aired on Global, Saturday mornings at 9:30 starting in January. Taylor Wright the host and his camera man Doug Vopel visited Ritchie's End of Trail this past August for a Bear Hunt. Taylor was successful but I will have to leave the details for the show. You can visit Taylor's website at www.thecanadiantradition.com

We've had a couple of other exciting happenings around camp this past season.

Greg & Marlena Ireland choose Ritchie's End of Trail as their honeymoon destination. Eat your heart out guys because Marlena actually had her own boat before Greg came along and yes Marlena cleans the fish.

We also had our 1st Annual Pig Roast and Horseshoe Tournament this year. We plan on holding this every year on the August long weekend. Our first annual was a great success with over 50 people attending. Steve cooked the pig to perfection and for a nominal fee all guests ate and joined in on the tournament. We managed to raise \$605.00 that was donated to the community center.

Bernie's Northern



Biggest Walleye



Greg & Marlena Ireland



1st Annual Pig Roast



Taylor Wright/Doug Vopel



Ready, Set...Go!



Planning a trip that will take you across the border and back? Travel document requirements are changing!

Land & Sea Travel

The U.S. Department of Homeland Security and the U.S. Department of State have announced the Notice of Proposed Rulemaking for the land and sea portion of the Western Hemisphere Travel Initiative (WHTI).

WHTI Land and Sea Transition:

Beginning **June 1, 2009**, the U.S. government will implement the full requirements of the land and sea phase of WHTI. This requires most U.S. citizens entering the United States at sea or land ports of entry to have a passport, passport card or WHTI-compliant document.

Please note: Children under the age of 16 will be able to continue crossing land borders using only a U.S. birth certificate after the new law takes effect in June. The original birth certificate or a copy may be used.

A Notice of Proposed Rulemaking (NPRM) proposing new documentation requirements for U.S. citizens entering the U.S. by land or sea from within the Western Hemisphere is now available at www.dhs.gov. The NPRM also outlines ongoing efforts to provide other alternative documents.

A detailed list of Frequently Asked Questions about WHTI is available at www.cbp.gov. Travelers are also encouraged to visit www.travel.state.gov for additional information on your destination, as well as helpful resources provided by the Department of State's Bureau of Consular Affairs.

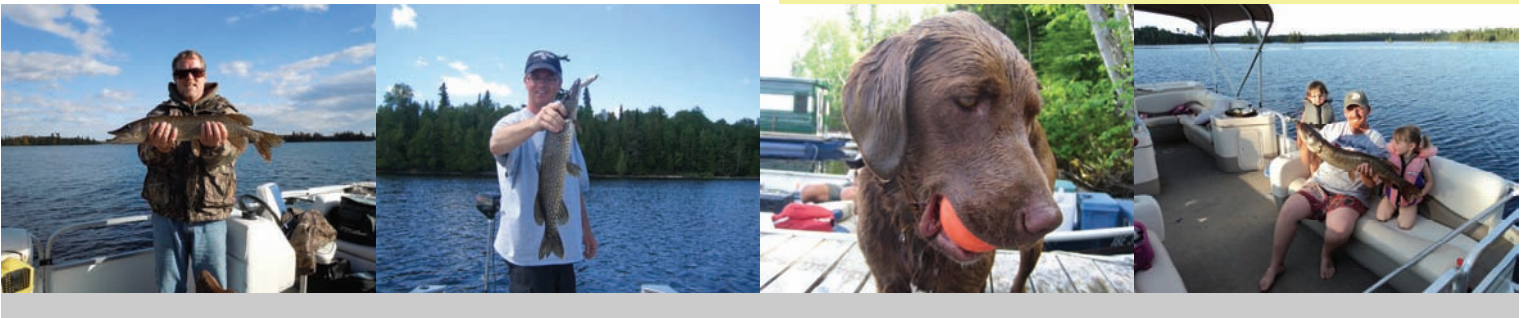
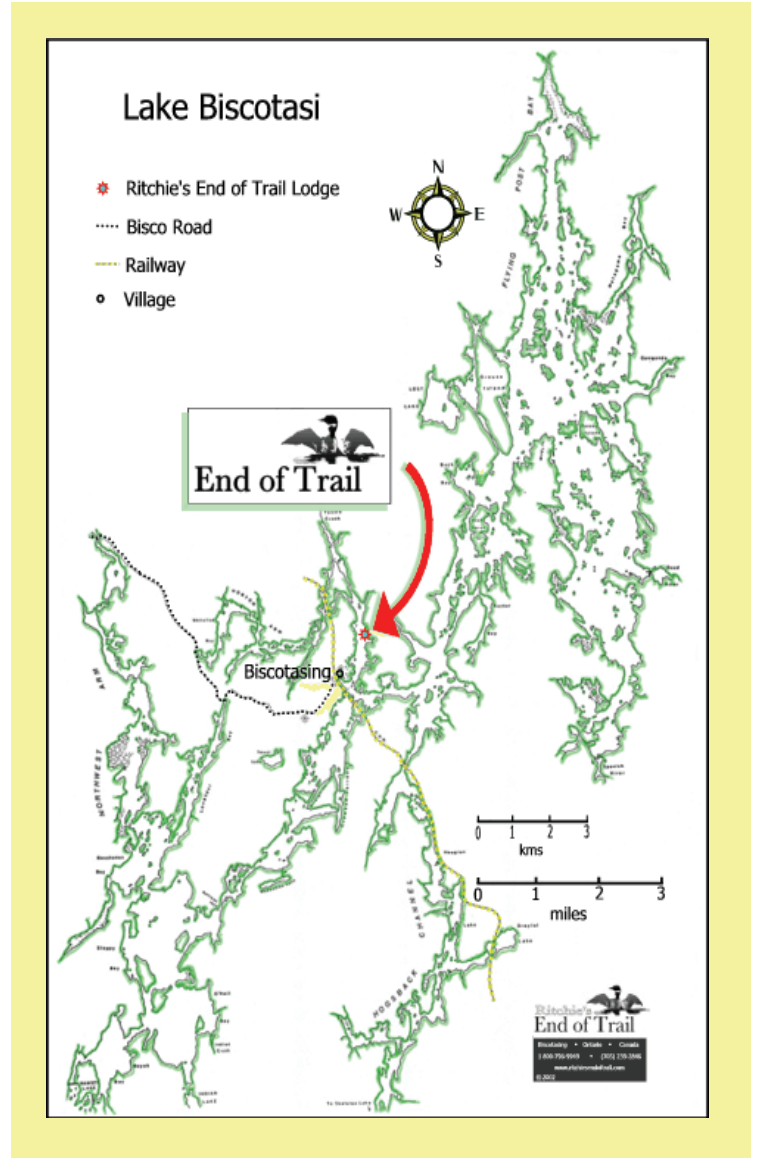
New News at Ritchies...

Over the past season Steve and Taylor have worked hard at maintaining the camp. Taylor completed painting all the cabins while Steve spent a lot of time maintaining the equipment, the grounds, cabins, outboards and boats. Our focus next year will be on the cabin interiors and roofs. We plan on installing steel roofing on the cabins doing one or two a year till completion. We will be painting the interiors and look at installing more pine tong and grove ceilings and floors.

As most of our customers know the previous owners have always tried to keep the outboard fleet of motors fairly current to minimize any problems on the lake so our customers can enjoy their time fishing, worry free. I have added another two 2010 Yamaha motors to the fleet this year and will continue to eliminate older motors and add Yamahas to the fleet. The Yamaha has been a proven worry free motor that we have not had a single problem with since it's inception to the camp in the spring of 2008. That's three full seasons with not one mechanical problem to date.

We will also be working on the boats this year. I plan on doing two things. The first part is to re-rivet some of the older boats and the second part would be replacing the oldest boats with new boats. This faze will be done slowly over time with the addition of one or two new boats each year.

Steve has continued to work on the BMU (Bear management Area) by maintaining the baits daily as well as moving and creating new baits. Six of our sites are monitored by trail cams, this allows us to determine the size of our bears and times they hit our baits. This gives our hunters the best opportunity at a successful hunt. The TV Show mentioned early in this newsletter, The Canadian Tradition will also be airing in 2011 and should prove helpful in booking bear hunts next fall.



2010 Sport and Fishing Shows.

At time of printing show dates had not been confirmed. Please visit our website for shows in your area.

We will be attending our regular shows in Novi Michigan, Erie PA, Buffalo NY and both Toronto shows. I do plan on adding a couple of additional shows hopefully one in Ohio as well as Indiana.

Please drop by and say hello, we would love to trade fishing stories with you!

Hunting Packages.....

Please see our website for complete details of the following packages:

Fin, Fir & Feather:

Enjoy fall fishing and hunt for ruffed grouse, snowshoe hares, ducks and geese.

Fall Fishing & Black Bear :

Enjoy fall fishing and hunt for black bear. We have 64 square kilometers of exclusive bear hunting area.

Moose::

Moose in our area inhabit vast areas of clear cuts, swamps, lakes and rivers—all surrounded by wilderness forests.



Tips on Live Release of Fish

Using proper handling and release techniques improves fish survival. Here are some tips for successful catch-and-release:

Angling

- use barbless hooks,; avoid using live or organic bait
- reduce the time the fish is played

Handling

- keep the fish in the water as much as possible and handle the fish gently
- reduce handling that removes the slimy protective coating on fish
- do not squeeze or touch the gills. Grasp the fish just behind the gill covers
- use long-nosed pliers to remove the hook quickly without tearing or injuring the fish. If the fish is hooked deeply, cut the line and leave the hook in when the fish is released
- never put a fish that you may release on a stringer, use a live well or release the fish immediately

Remember that all fish kept (in a live well, on a stringer, etc) and not immediately released count towards your daily catch and possession limit

Photographing

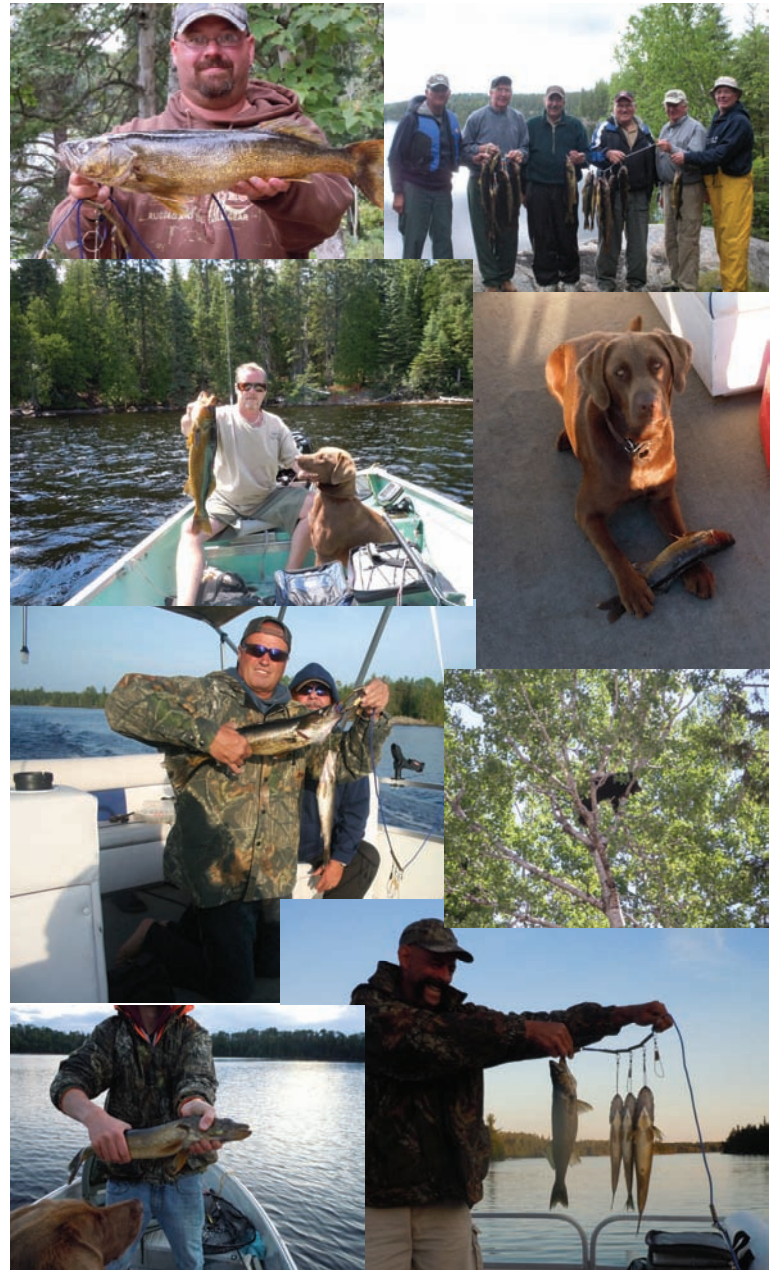
- be ready ahead of time! Take pictures quickly, minimizing the amount of time the fish is out of the water
- hold the fish in a horizontal position, supporting its weight with your arm and hands. Do not hold large fish in a vertical position

Releasing

- revive the fish before letting it go. Hold the fish upright in a swimming position in the water, moving the fish slowly forward and backward so water runs through the gills
- ensure the fish is breathing and can swim away under its own power before it is released

Remember—The Future of Fishing is in Your Hands

Pictures Say a Thousand Words



Referral Program...

As our way of saying thank you...

- Refer one group of four or more and receive **\$100.00**, redeemable at End of Trail.
- Refer two groups of four or more and receive **\$300.00**, redeemable at End of Trail.
- Refer three groups of four or more and receive **one full week**, courtesy of End of Trail (applicable for one person).

Please email Brian to receive your credit if you have referred groups for the 2010 season.



Biscotasing • Ontario • Canada

1 800-796-9949 • (705) 239-2846

www.ritchiesendoftrail.com

© 2005